



# ANNIVERSARY 16763A



## **ANNIVERSARY 16763A** Model number: 31ANN16763AH18

**3 beds • 2 baths • 1216 sq.ft. • 16' width • 76' depth**

Our home building facilities invest in continuous product and process improvements. Plans, dimensions, features, materials, specifications and availability are subject to change without notice or obligation. Renderings and floor plans are representative likenesses of our homes and may differ from the actual homes. We invite you to tour a Home Center near you and inspect the highest value in quality housing available or call (719) 545-4266 to speak with a Home Consultant. Copyright 2017, CMH. All rights reserved.

<https://www.coclaytonhomes.com>

### CLAYTON HOMES-PUEBLO

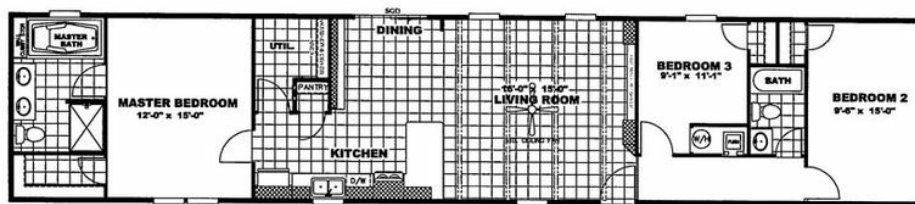
3912 NORTH FREEWAY RD  
PUEBLO, CO 81008

Monday - Thursday: 9am to 6pm  
Friday: 9am to 6pm  
Saturday: 9am to 5pm  
Sunday: Closed

(719) 545-4266



# ANNIVERSARY 16763A



## ANNIVERSARY 16763A Model number: 31ANN16763AH18

**3 beds • 2 baths • 1216 sq.ft. • 16' width • 76' depth**

Our home building facilities invest in continuous product and process improvements. Plans, dimensions, features, materials, specifications and availability are subject to change without notice or obligation. Renderings and floor plans are representative likenesses of our homes and may differ from the actual homes. We invite you to tour a Home Center near you and inspect the highest value in quality housing available or call (719) 545-4266 to speak with a Home Consultant. Copyright 2017, CMH. All rights reserved.

<https://www.coclaytonhomes.com>

### CLAYTON HOMES-PUEBLO

3912 NORTH FREEWAY RD  
PUEBLO, CO 81008

Monday - Thursday: 9am to 6pm  
Friday: 9am to 6pm  
Saturday: 9am to 5pm  
Sunday: Closed

(719) 545-4266